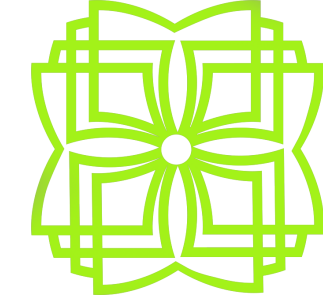


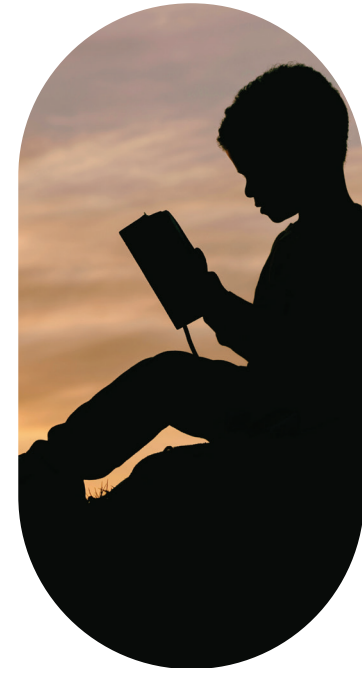
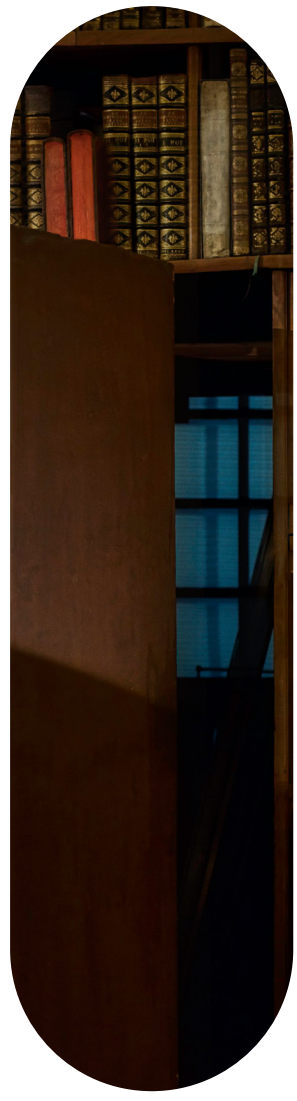
HAVEN



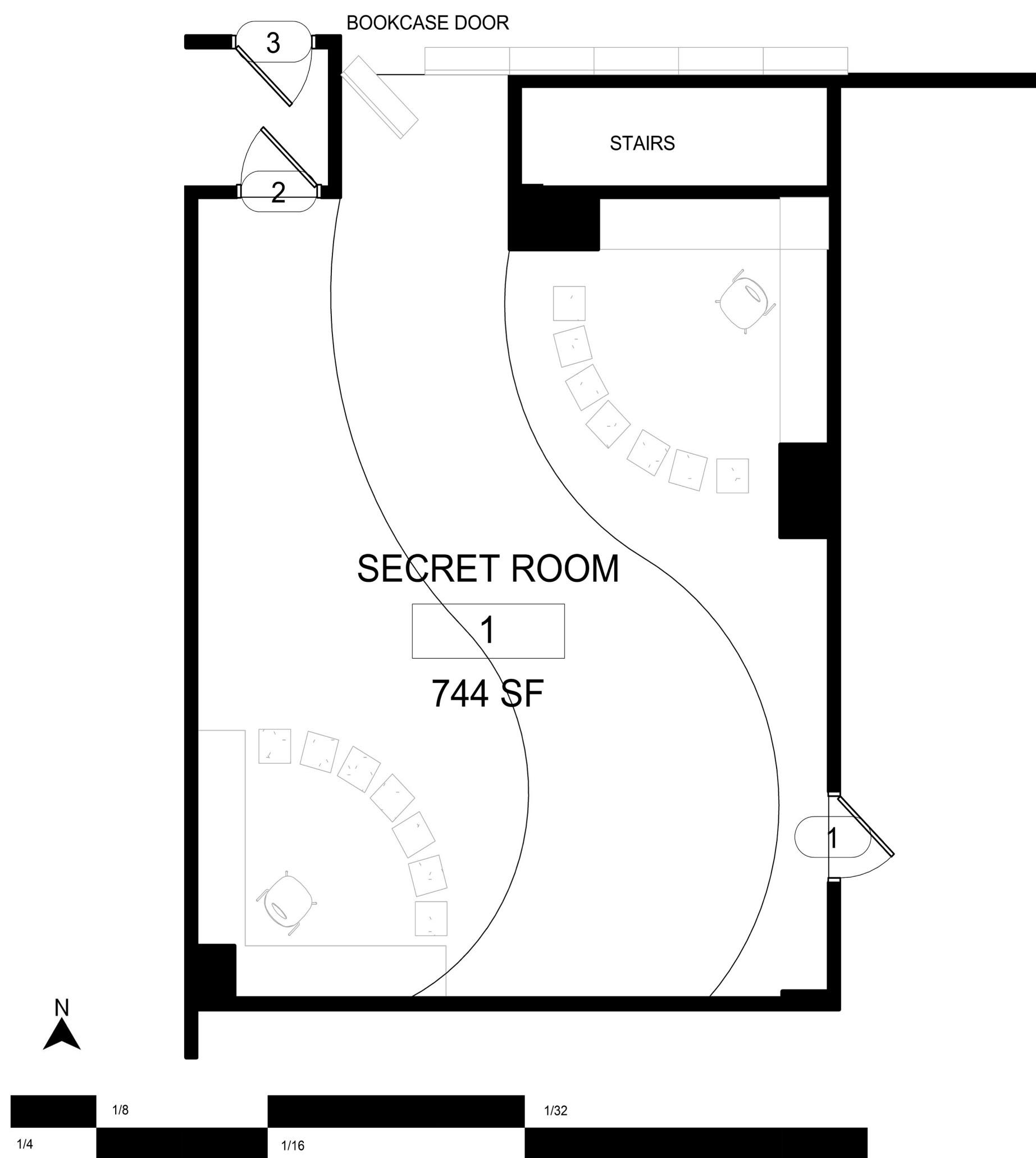
Rochester
Public Library

CONCEPT STATEMENT

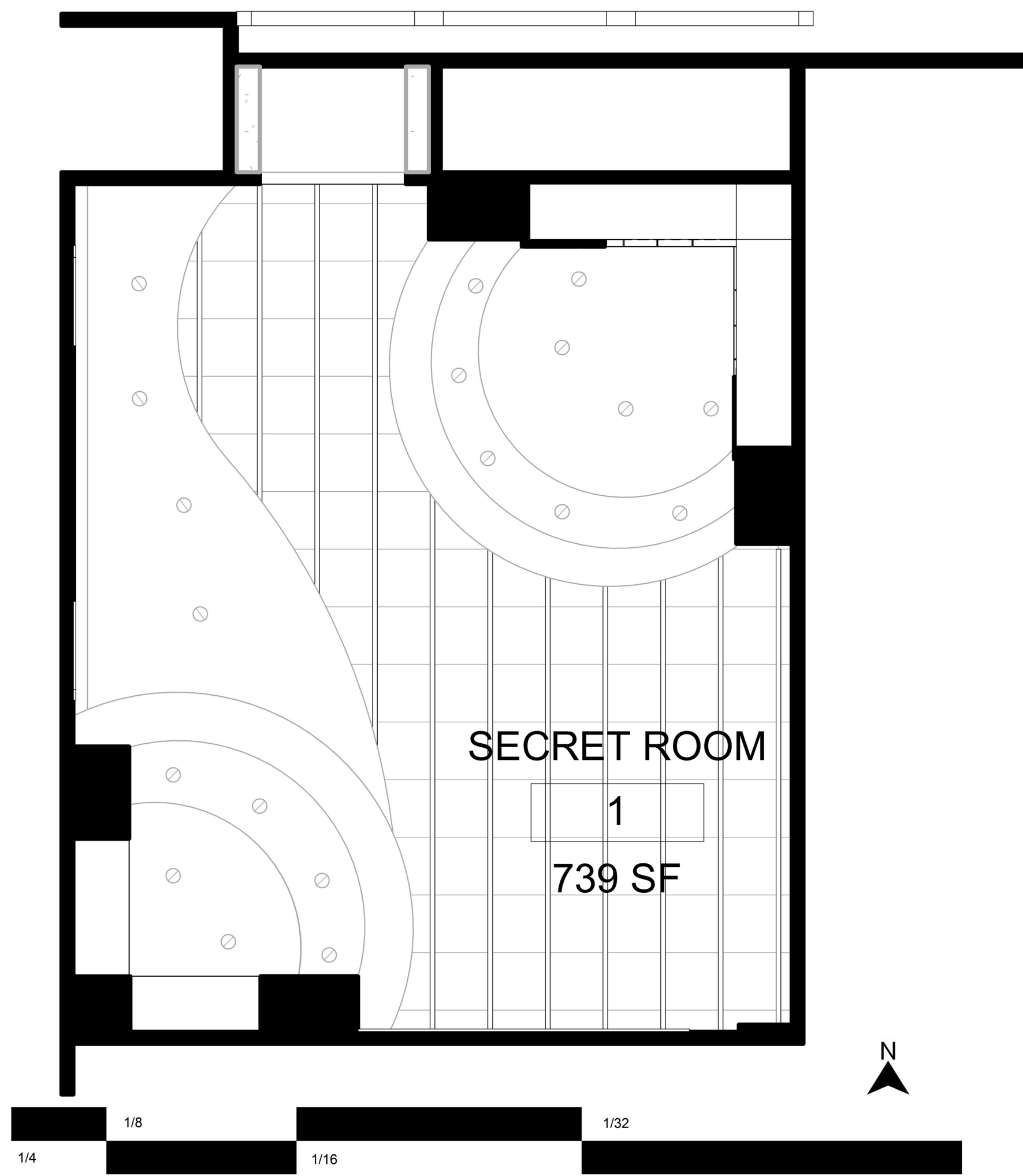
The Rundel Central Library's secret room holds important cultural and historical context to Rochester. Currently, this secret room preserves this history, but the magic of the room has been lost. The goal of this design is to maintain the history while creating a flexible multi-use space. Haven's design revives the magic through its lively and calming scheme, the integration of geometrically organic forms, as well as reflecting Rochester's past.



FLOORPLAN: STORYTIME LAYOUT



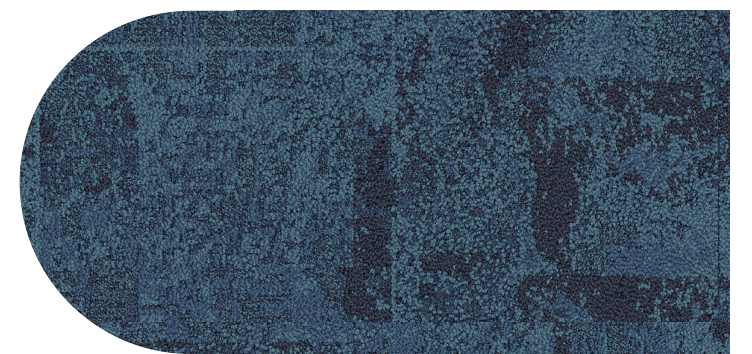
REFLECTED CEILING PLAN



SITE PLAN



MATERIALS

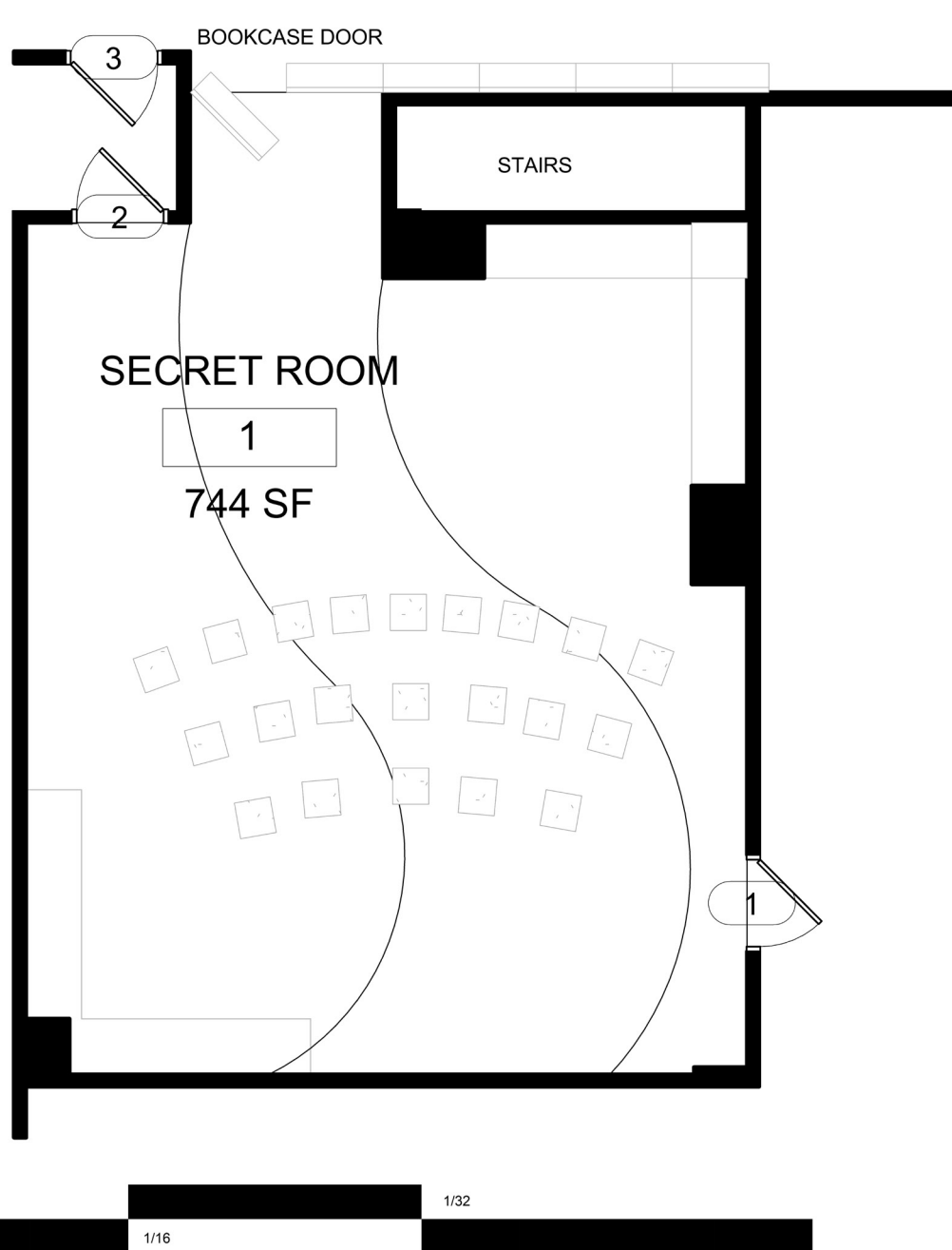
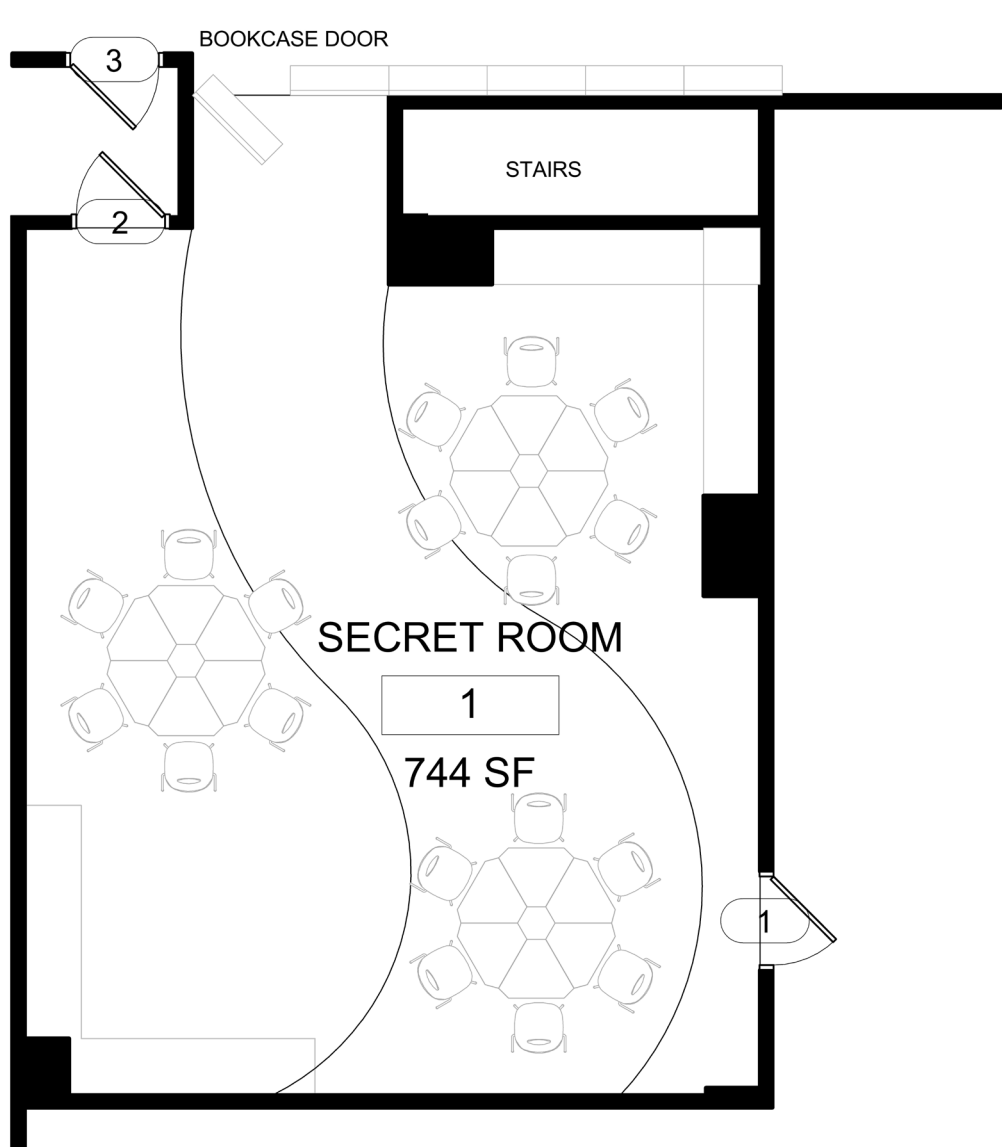
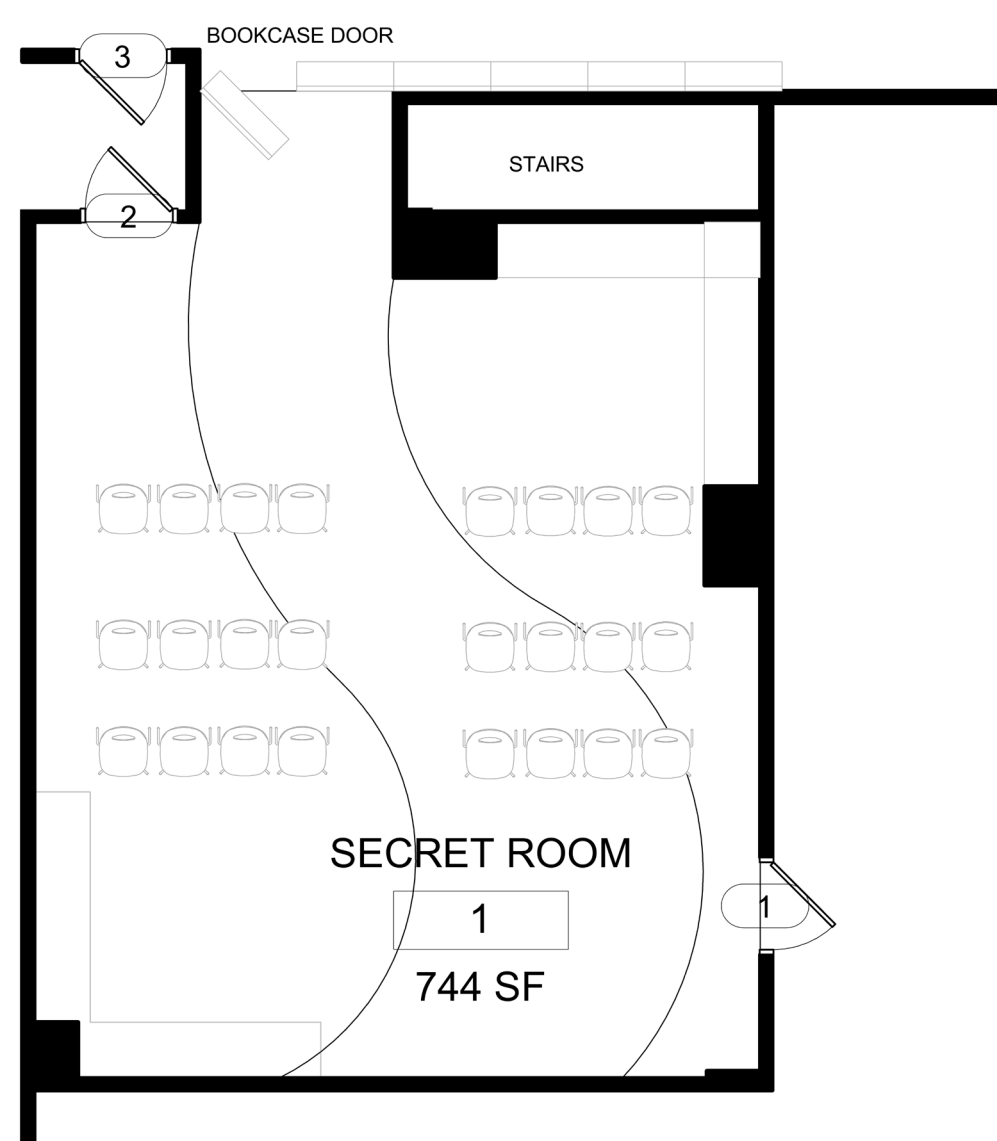


FURNITURE





ALTERNATIVE FLOORPLANS

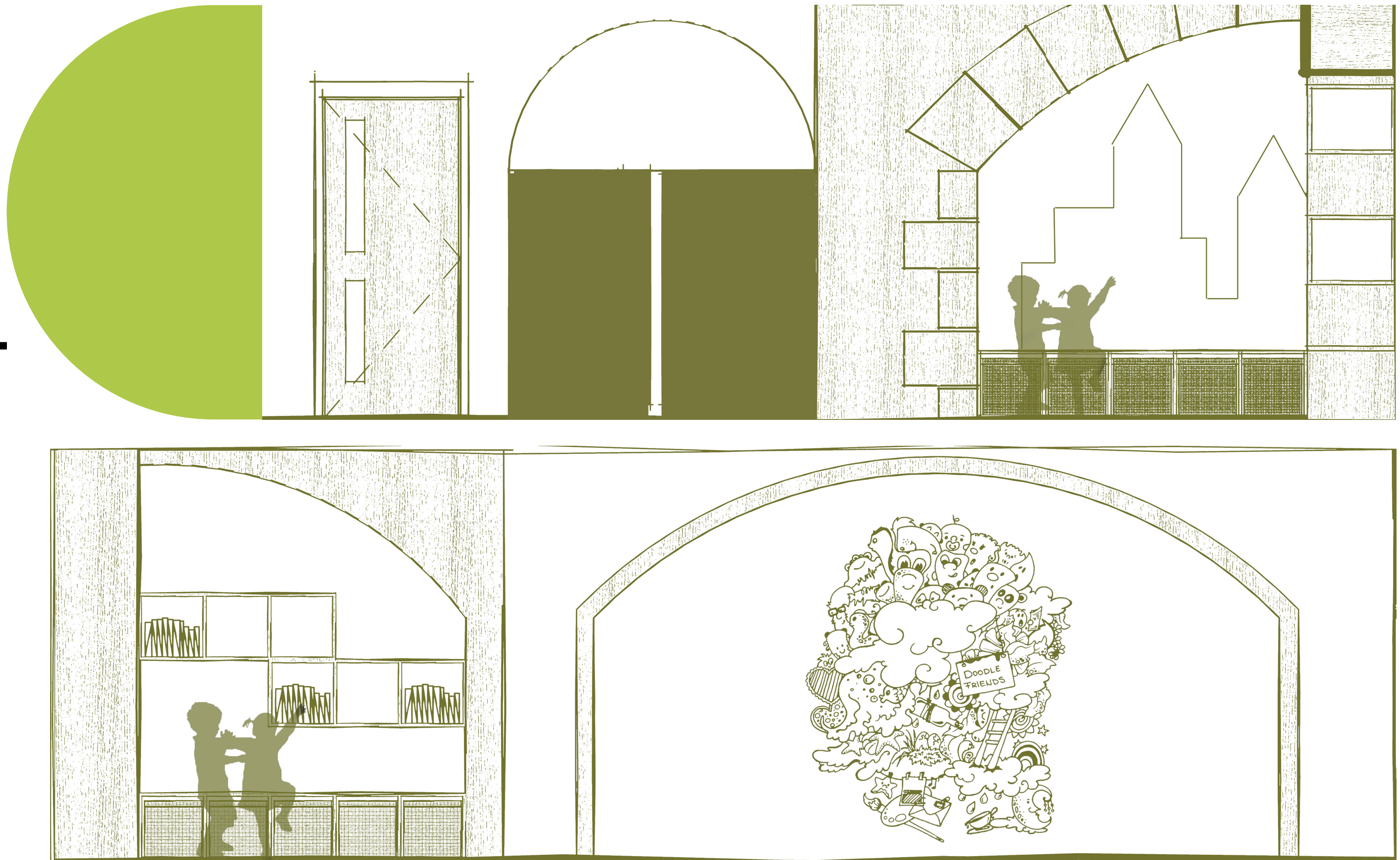


N

1/4 1/8 1/16 1/32



INTERIOR ELEVATIONS



Team 3

Caroline Pedrotti, Fourth Year
 Sarah Vollmer, Fourth Year
 Jonathan Sutton, Third Year
 Thomas Richter, Third Year
 Sara Chambers, Second Year
 Gillian Kostek, First Year
 Amy McFeely, First Year