



# CRITICAL CARE UNIT

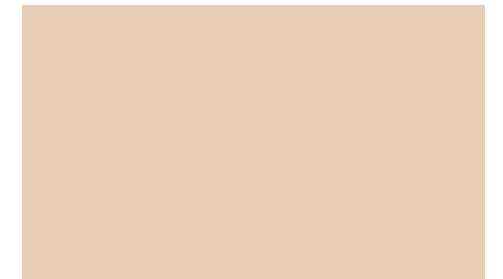
HEALTHCARE DESIGN STUDIO

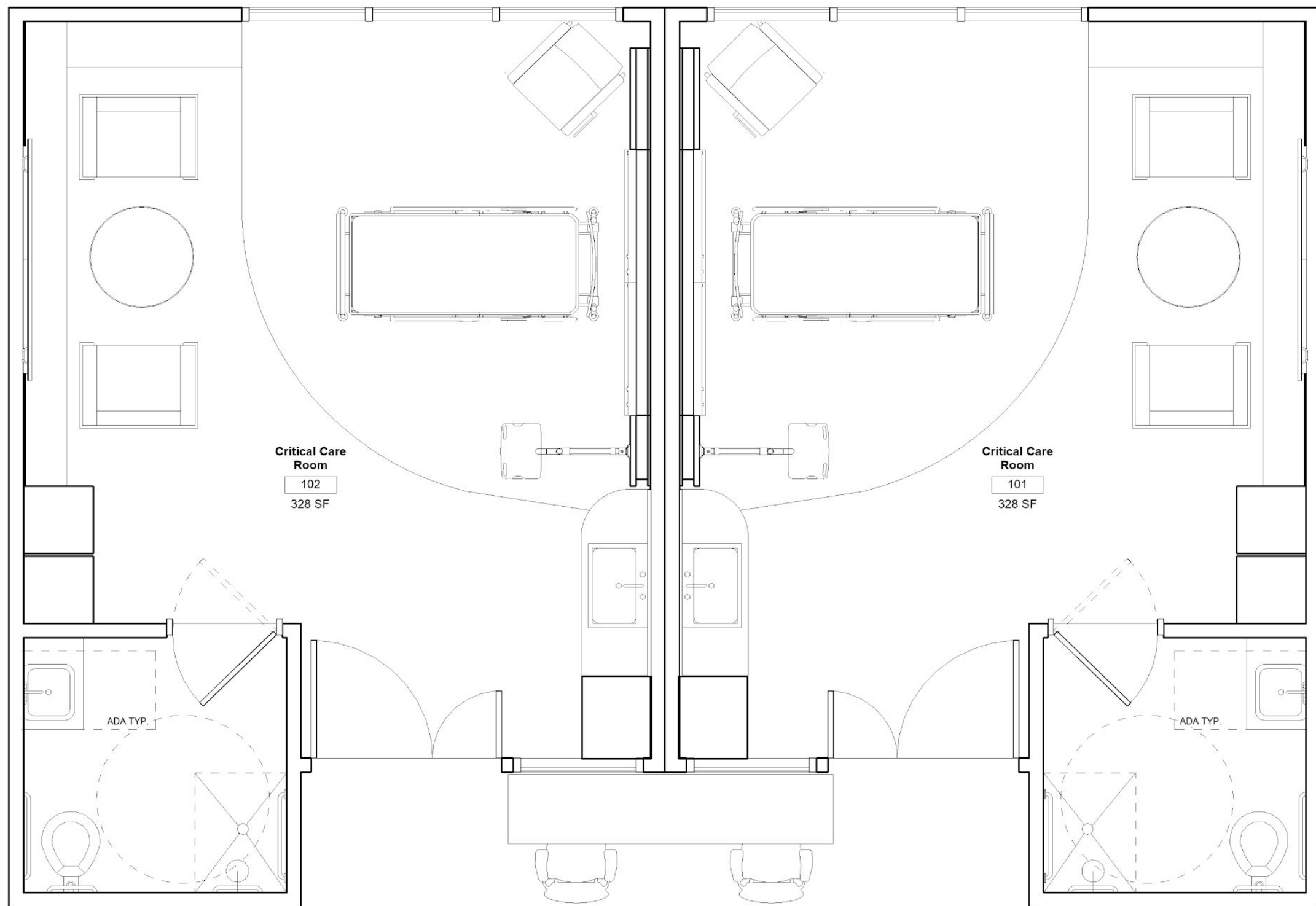
THOMAS RICHTER



# MISSION STATEMENT

The color blue is typically associated with credibility, trust, knowledge, power, professionalism, cleanliness, and most importantly **calmness**. The **Ocean Blue** themed-design of this intensive care unit will immerse the patient into a calm deep blue ocean interior. The naturalistic color, tone, and mood of the overall space will enhance the psychological health and well-being of the patient. This intensive care unit will strive to create a peaceful and regenerative environment that supports psychological and physical restoration.





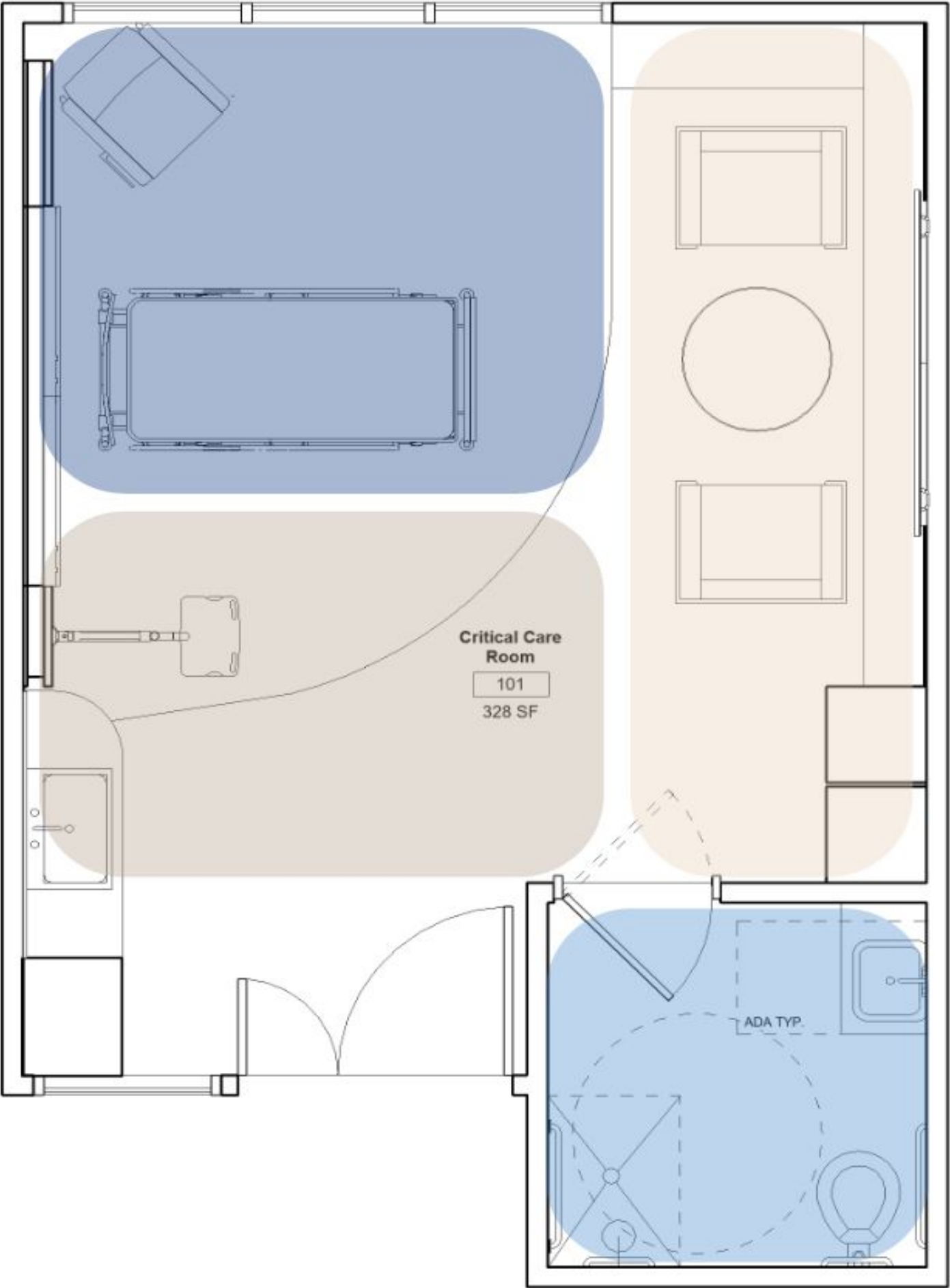
# CRITICAL CARE ROOM FLOOR PLAN

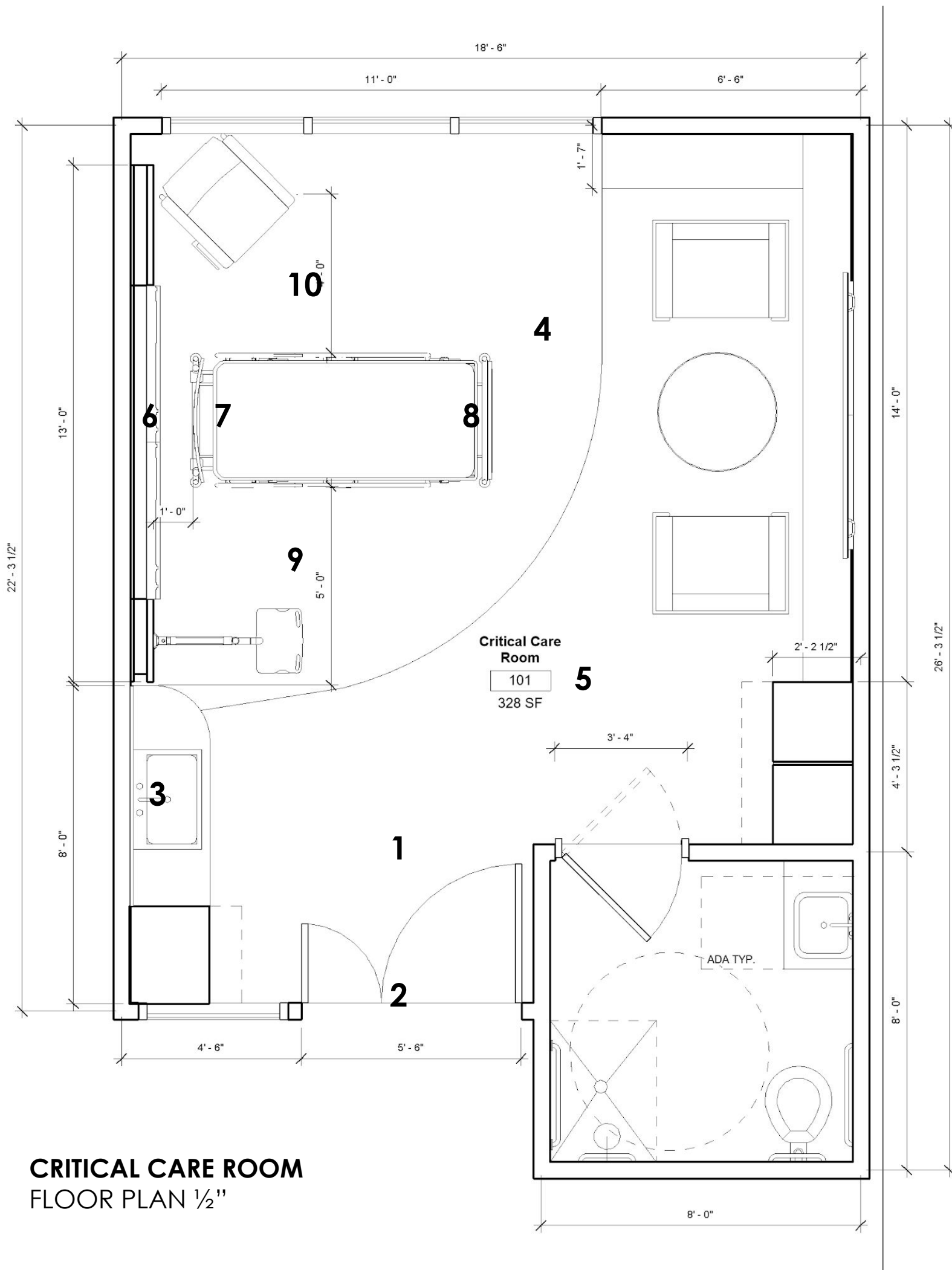
SCALE 1/4"=1'0"

CRITICAL CARE ROOM

ZONING 1/2" = 1'0"

-  PATIENT ZONE
-  FAMILY ZONE
-  STAFF ZONE
-  BATHROOM



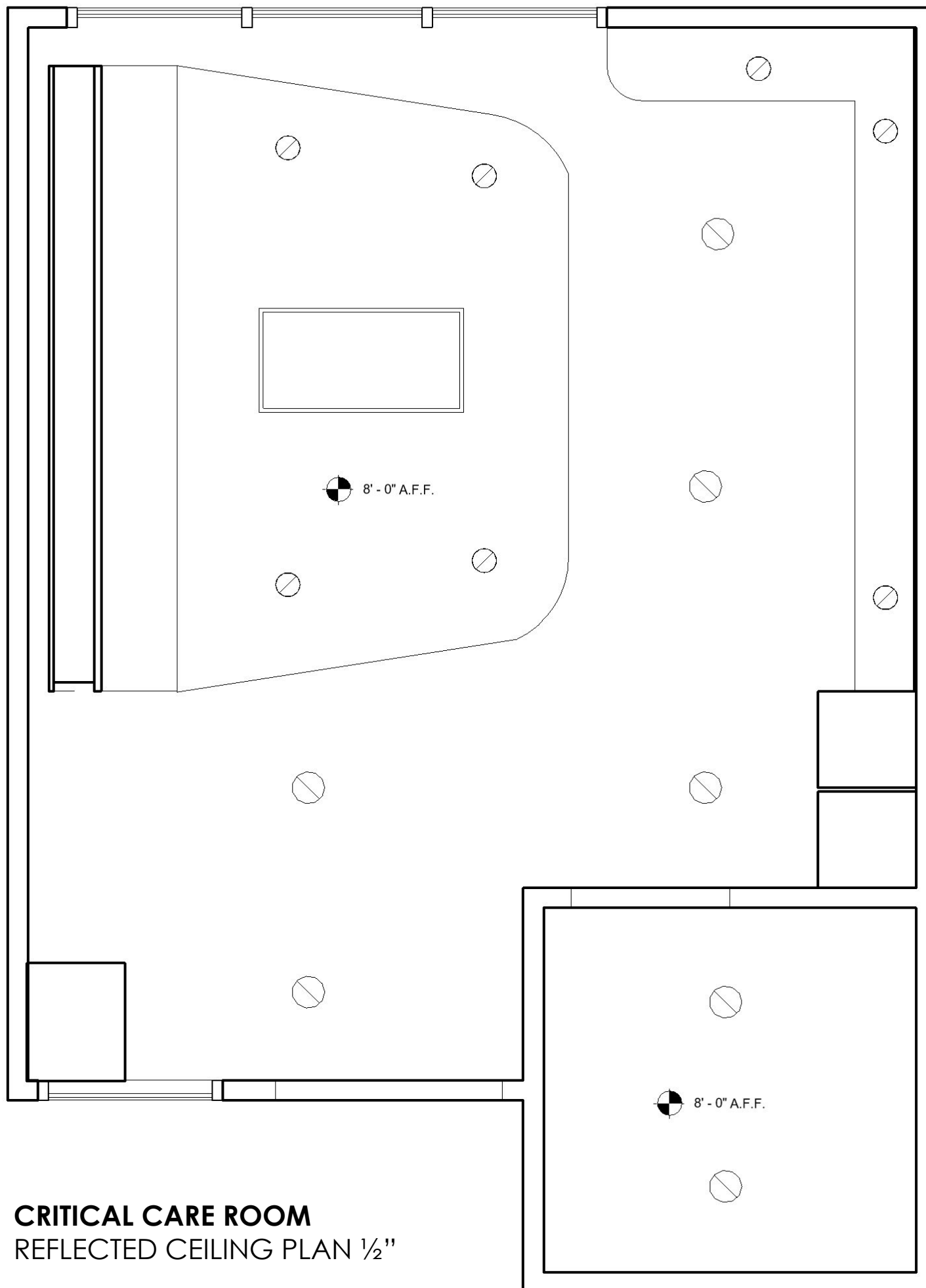


**CRITICAL CARE ROOM**  
FLOOR PLAN 1/2"

## ROOM ANNOTATIONS (FGI)

- ALL DOORS SHALL BE THE SWING TYPE OR SHALL BE SLIDING DOORS
- MIN CLEAR DOOR OPENING 45.5" IN WIDTH AND 83.5" IN HEIGHT
- HAND WASHING STATIONS SHALL BE PROVIDED IN EACH ROOM
  - LOCATED MUST BE VISIBLE AND UNOBSTRUCTED
- WALL FINISHES SHALL BE WASHABLE USE OF FABRIC PRIVACY CURTAINS SHALL BE PERMITTED IF THE FABRIC IS WASHABLE
- MIN CLEAR FLOOR AREA SHOULD BE 200 SQFT
- MIN HEADWALL WIDTH OF 13FT
- 1 FT CLEARANCE FROM HEAD OF BED
- 5FT FROM FOOT OF BED
- 5FT FROM TRANSFER SIDE
- 4FT FROM NON-TRANSFER SIDE





## CEILING ANNOTATIONS

- MIN CEILING HEIGHT 7' 10"
- CEILINGS SHALL BE CLEANABLE WITH ROUTINE HOUSEKEEPING EQUIPMENT
  - EXAM LIGHT 2'X 4'
  - RECESSED CAN LIGHTS 6" DIAMETER
  - RECESSED CAN LIGHTS 8" DIAMETER
    - ARMSTRONG LIGHTING
    - ARMSTRONG CEILING PANELS



VIEW 1

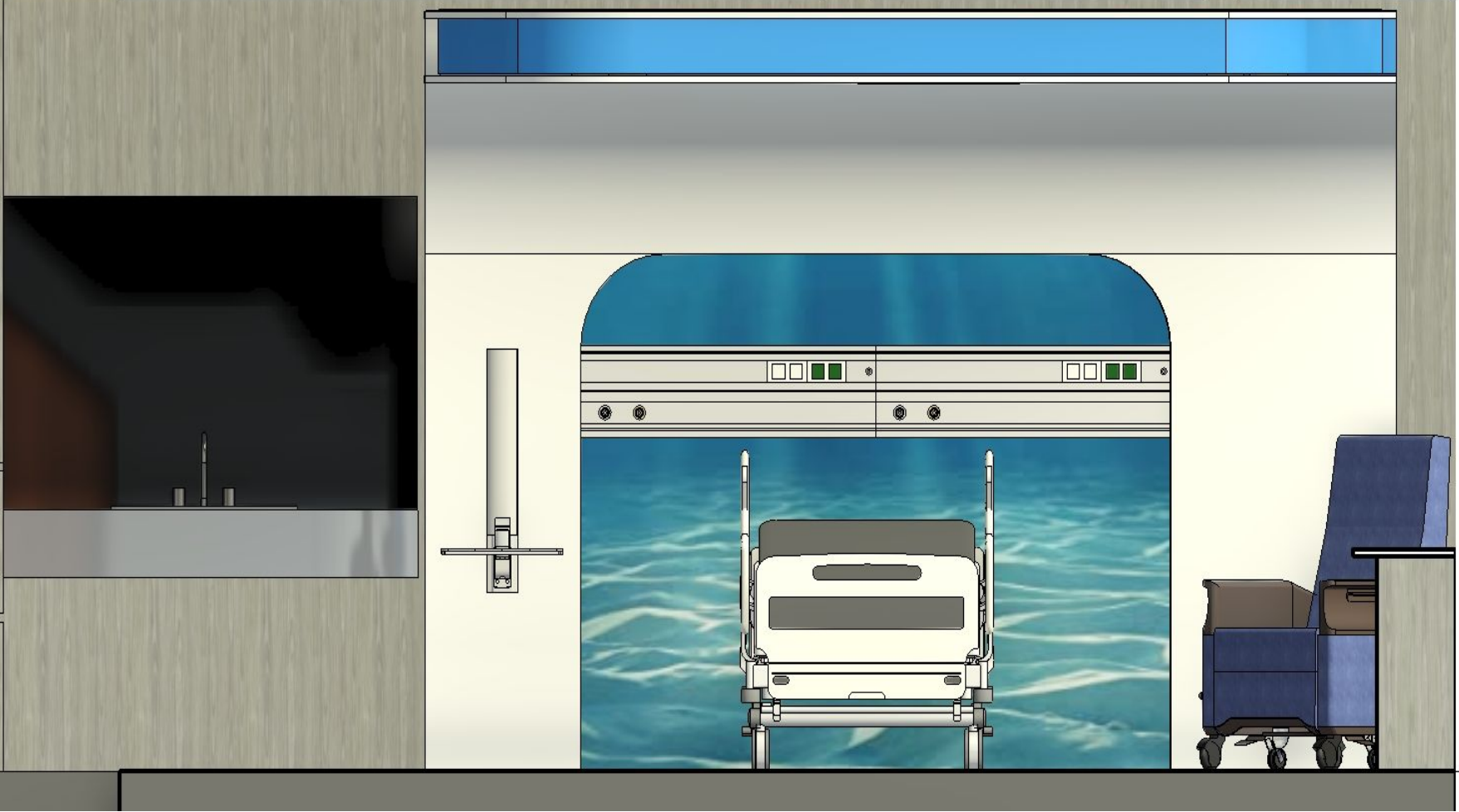




VIEW 2



HEADWALL



FOOTWALL





**PATIENT AREA - FULL MATERIAL PALATE**

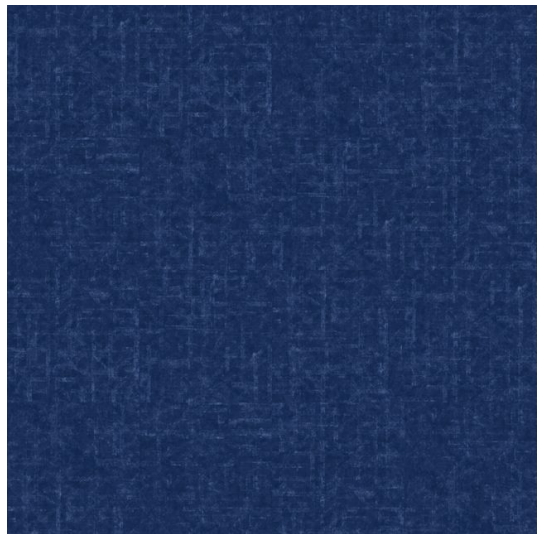




## INTERFACE

HIGH PERFORMANCE LVT TILE  
CRITERION CLASSIC COLLECTION  
C00106 ANTIQUE LIGHT OAK

NOMINAL DIMENSION:  
4.923 IN X 39.38 IN



## INTERFACE

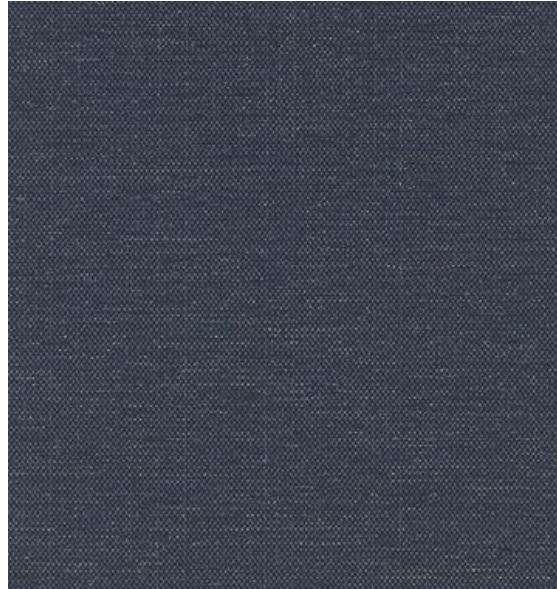
HIGH PERFORMANCE LVT TILE  
STARGAZING COLLECTION  
SCORPIO  
A1907 ROYAL BLUE

NOMINAL DIMENSION:  
12 IN X 12 IN

# FLOOR FINISHES







## KNOLL TEXTILES

67% SUNBRELLA® ACRYLIC, 33%  
SUNBRELLA® POLYESTER  
CHANT  
#K20566 DENIM  
W: 54 IN  
FINISHES: WATER AND STAIN REPELLENT  
+ DEFIANCE ANTIMICROBIAL  
WYZENBEEK: 85,000



## KNOLL TEXTILES

67% SUNBRELLA® ACRYLIC, 33%  
SUNBRELLA® POLYESTER  
ISLAND  
#K20532 HIGH TIDE  
W: 54 IN  
FINISHES: WATER AND STAIN REPELLENT +  
DEFIANCE ANTIMICROBIAL  
WYZENBEEK: 85,000



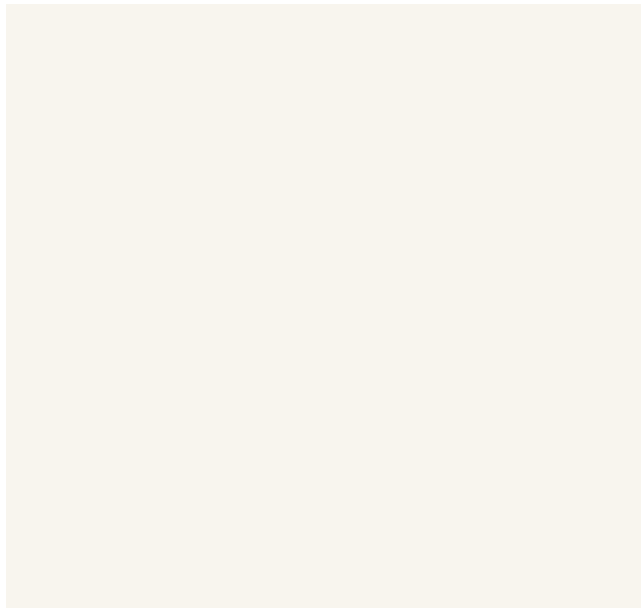
## KNOLL TEXTILES

TYPE 2/VINYL  
REGENT  
#WC18687 VALOR  
W: 54 IN  
100% VINYL  
NRC 0.82

# UPHOLSTERY/DRAPERY







## SHERWIN WILLIAMS

INTERIOR PAINT  
ORIGAMI WHITE  
SW 7636

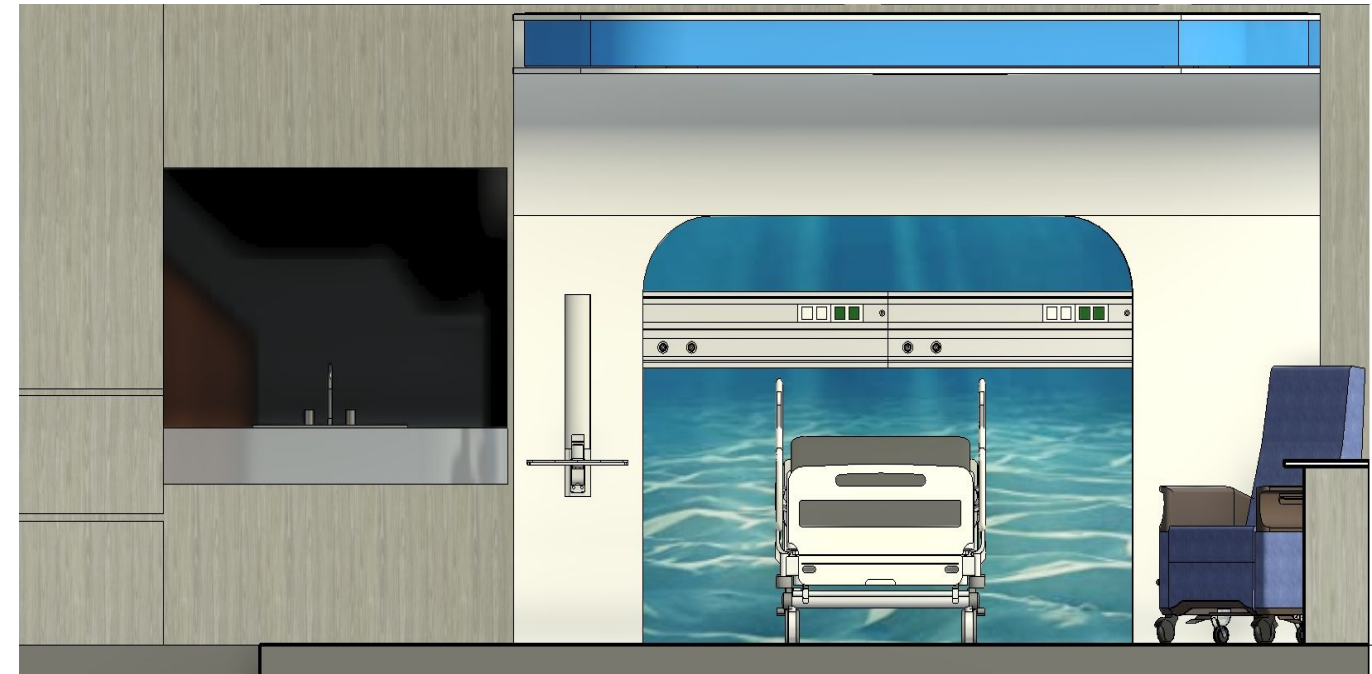


## WILSONART

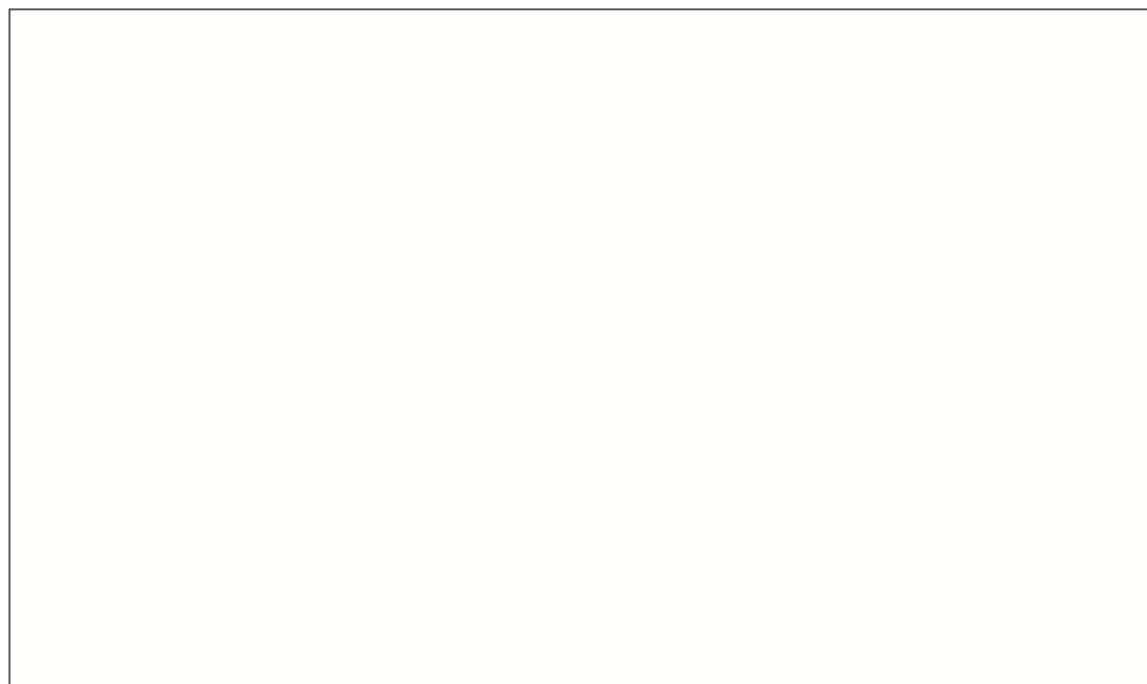
HIGH PRESSURE LAMINATE  
DARK OAK 1860  
MATTE FINISH

GREENGUARD Gold Certificate Chemsurf® Laminate  
GREENGUARD Gold Certificate Compact Laminate  
GREENGUARD Gold Certificate Fire-Rated Laminate  
GREENGUARD Gold Certificate High Wear Laminate  
GREENGUARD Gold Certificate Laminate GREENGUARD  
Gold Certificate RE-COVER™ Laminate

# WALL FINISHES







**WILSONART**

HIGH PRESSURE LAMINATE

WHITE 1570

MATTE FINISH

GREENGUARD Gold Certificate Chemsurf® Laminate GREENGUARD Gold Certificate Compact Laminate GREENGUARD Gold Certificate Fire-Rated Laminate GREENGUARD Gold Certificate High Wear Laminate GREENGUARD Gold Certificate Laminate GREENGUARD Gold Certificate RE-COVER™ Laminate

**SURFACE FINISHES**





# FURNITURE SELECTIONS



**EMPATH CHAIR**

STEELCASE



**CORBU CHAIR**

DWR



**405 ELECTRIC BED**

HILL ROM



#### FLOOR PLAN INFO:

- 2ND FLOOR OF THE HOSPITAL
- 18 CRITICAL CARE UNITS
- MOST COMPONENTS OF EAST AND WEST WING MIRRORED
- RACE TRACK DESIGN
  - CENTRAL AREA - STAFF ZONES
  - SURROUNDED BY CRITICAL CARE UNITS
    - ALL PATIENT ROOMS HAVE AN OUTDOOR VISTA
  - FAMILY ZONES LOCATED IN CENTER OF FLOOR
  - 8'0" CORRIDOR WIDTH
- VERTICAL CIRCULATION ON OPPOSITE WINGS
  - 2 CENTRAL ELEVATORS (FAMILY)
  - 2 ELEVATORS EACH ON EAST/WEST WING (STAFF/PATIENTS)



PATIENT ZONES



FAMILY ZONES



STAFF ZONES

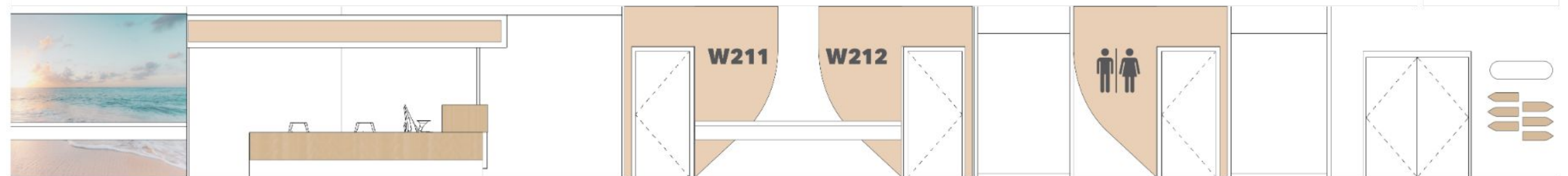
# INTENSIVE CARE UNIT FLOOR PLAN

SCALE  $\frac{1}{8}" = 1'0"$





**INTERIOR ELEVATION - WAYFINDING EAST WING**



**INTERIOR ELEVATION - WAYFINDING WEST WING**

#### **CIRCULATION INFO:**

- WEST WING - BEIGE (LAND)
- EAST WING - BLUE (SEA)
- WAYFINDING TECHNIQUES
  - COLOR CODING
  - SIGNAGE
  - SYMBOLS
- EVIDENCE BASED DESIGN ARTWORK REDUCES STRESS FOR BOTH PATIENTS AND STAFF
  - MOST ARTWORK WOULD HAVE AN OCEAN THEME - NATURALISTIC DESIGN
- HANDRAILS AT 36"

## **MAIN CIRCULATION**

**WALL GRAPHICS, ROOM SIGNAGE, AND WAYFINDING**



#### GREETER'S STATION INFO:

- USES NEUTRAL AND BLUE TONES FOR RELAXATION
  - IMMEDIATELY VISIBLE FROM THE ENTRANCE
  - VISUAL CUES FOR WAY FINDING TO EACH WING
- BLUE WAVE WALL COVERING VISUAL HIGHLIGHT OF THE SPACE
  - BY MDC WALL SOLUTIONS

## GREETER'S STATION

### WALL GRAPHICS, ROOM SIGNAGE, AND WAYFINDING





#### VISITOR'S LOUNGE INFO:

- ACOUSTIC PROPERTIES
  - ARMSTRONG CEILING SOLUTIONS
  - INTERFACE CARPET
- VISITOR SHOWER STATIONS
- VISITOR LOUNGE SEATS ARE CUSTOMIZABLE, CAN BE SEPARATED OR JOINED AS SEEN IN RENDERING

## VISITOR'S LOUNGE

### FEATURES

Sayl Chair

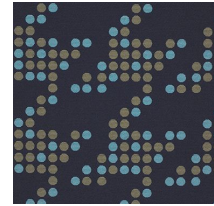


Finishes



Specifications

Dimensions: 37.75"H x 19.75"D x 24.5"W  
Statement of Line: Work Chairs  
Seat Height: Standard Range: 16" - 20.5"  
Seat Depth: Adjustable Seat: 16" - 18"  
Tilt Options: Tilt Limiter with Seat Angle  
Arm Options: Height Adjustable Arms  
Base Options: 5 - Star



Sayl Side Chair

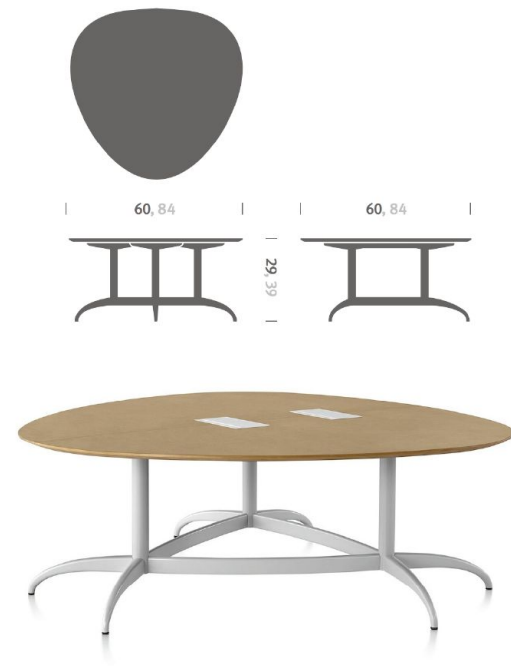
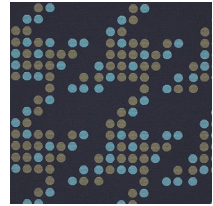


Finishes



Specifications

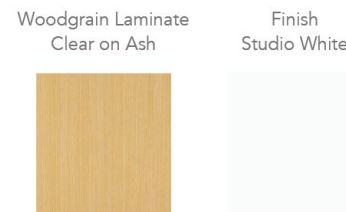
Dimensions: 34.25"H x 19.25"D x 24"W  
Statement of Line: Side Chair  
Seat Height: Table Height  
Seat Option: Seat Pad



Guitar Pick Table



Finishes



Specifications

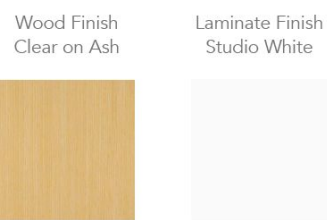
Dimensions: 29", 84"H x 84"D  
Statement of Line: Conference Tables  
Electric Needed: Yes  
Height Adjustable: No



Peer Table



Finishes



Specifications

Dimensions: 30", 41.5"H x 120"D x 40"W  
Under Table Height: 25.5", 37" H  
Statement of Line: Freestanding Tables  
Electric Needed: Yes  
Height Adjustable: No

STAFF/FAMILY SPACES FURNITURE SELECTION

TABLES, SOFAS AND CHAIRS





## Canvas Vista

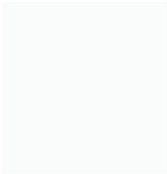


### Finishes

Woodgrain Laminate  
Clear on Ash



Finish  
Studio White



### Specifications

Desking:	37.75"H x 19.75"D x 24.5"W
Shared Storage:	22"H, 96"W, 20"D
Statement of Line:	Desking System
Fabric Screen:	Customizeable
Electric Needed:	Yes
Height Adjustable:	Yes

## HERMAN MILLER AND SUSTAINABLE PRODUCT DESIGN

HERMAN MILLER'S DFE PROTOCOL GOES BEYOND REGULATORY COMPLIANCE TO THOROUGHLY EVALUATE NEW PRODUCT DESIGNS IN THREE KEY AREAS:

- **MATERIAL CHEMISTRY AND SAFETY OF INPUTS**
- **DISASSEMBLY**
- **RECYCLABILITY**



## Ped Café Table



### Finishes

Wood Finish  
Clear on Ash



### Specifications

Dimensions	29.5"H x 25.5"W x 25.5"D
Statement of Line:	Café Tables
Electric Needed:	No
Height Adjustable:	No

HERMAN MILLER RESTRICTED LIST OF CHEMICALS BASED ON VOLUNTARY BUILDING STANDARDS, PRODUCT CERTIFICATIONS, AND APPLICABLE REGULATIONS.

- **ANTIMICROBIALS**
- **HALOGENATED FLAME RETARDANTS**

# STAFF/FAMILY SPACES FURNITURE SELECTION

TABLES, SOFAS AND CHAIRS

FLOORING FINISHES



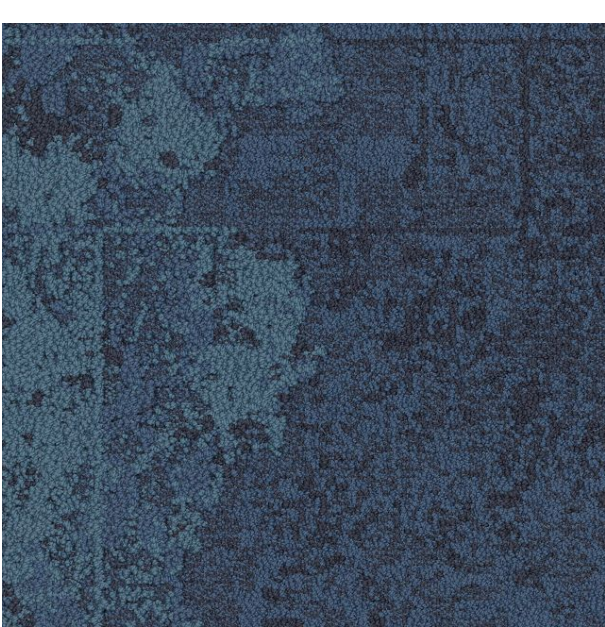
Corridor Flooring

LVT- Interface, Blue Lagoon



Corridor Flooring

LVT- Interface, Sand



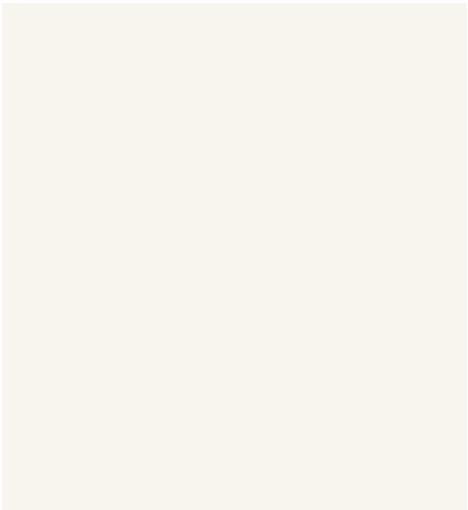
Visitor's Lounge

Carpet - Interface, Wave

WALL FINISHES



HIGH PRESSURE LAMINATE  
DARK OAK 1860  
WILSONART



SW 1247



SW 1478

**Sherwin William Paints Walls**



FLOORING FINISHES



Corridor Flooring  
LVT- Interface, Blue Lagoon



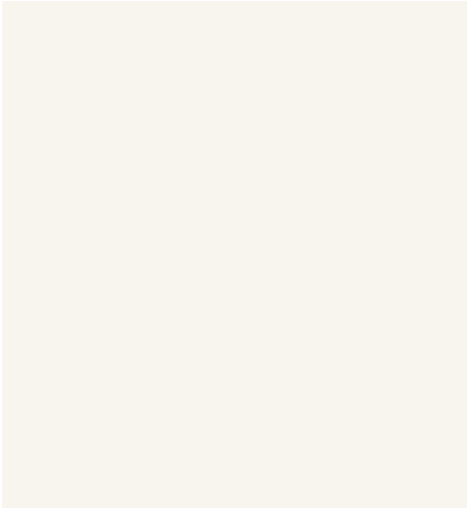
Corridor Flooring  
LVT- Interface, Sand



Nurse's Station  
LVT- Interface, Stone

WALL FINISHES

Sherwin William Paints Walls



SW 1247



SW 1478



SW 9467



SW 9031

STAFF ZONES MATERIAL SELECTION

## **FLOOR PLAN LAYOUT**

- SPACE FOR CLEARLY DEFINED PATIENT / FAMILY / CAREGIVER ZONES
- BATHROOM DOOR VISIBLE TO THE PATIENT WHILE IN BED
- ADEQUATE NUMBER OF PATIENT ROOMS AND BATHROOMS DESIGNED SPECIFICALLY FOR BARIATRIC PATIENTS

## **STAFF ZONE**

- ORGANIZED AND UNCLUTTERED WORKSPACE

## **PATIENT ZONE**

- DIRECT AND SHORT VISUAL SIGHT LINE TO PATIENT FROM CORRIDOR / DECENTRALIZED NURSING STATION
- SPACE FOR PREPARATION FOR CLINICAL PROCEDURES
- SPACE FOR PEOPLE AND EQUIPMENT IN CODE BLUE RESPONSE
- REDUCE NOISE BY BED LOCATION / ORIENTATION TO MOVE PATIENT HEAD AWAY FROM DOOR

## **FAMILY ZONE**

- FAMILY SPACE POSITIONED IN LINE OF SIGHT OF SIGHT OF STAFF SO THEY CAN BE INCLUDED IN CONVERSATION
- FURNITURE CONFIGURED TO FACILITATE COMMUNICATION
- IMPROVE FAMILY PRESENCE AND ENGAGEMENT IN PATIENT CARE

## **MATERIALS**

- SMOOTH SURFACES WITH MINIMUM PERFORATIONS AND CREVICES TO REDUCE RISK OF CONTAMINATION
- MINIMUM RIDGES OR REVEALS THAT COULD COLLECT DUST
- HIGH DURABILITY FOR ALL MATERIALS

# **CRITICAL CARE PATIENT ROOM RESEARCH/KEY POINTS**



THANK YOU!

COMMENTS/QUESTIONS